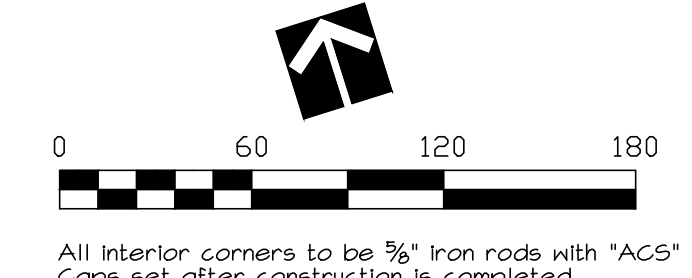


AMENDED PLAT OF
THE RESERVE at FRIARS CREEK
 Amending all of The Reserves at Friars Creek, a subdivision of record in
 Plat Year 2018, Plat #121-B, Plat Records of Bell County, Texas.
 WITHIN THE CITY OF TEMPLE, BELL COUNTY, TEXAS.

Being 17.275 Acres situated in the MAXIMO MORENO SURVEY, ABSTRACT 14, Temple, Bell
 County, Texas,



LOTS - 109
 TRACTS - 5
 BLOCKS - 5
 AREA - 17.275 ACRES

OWNERS
 PAD CONSTRUCTION, LLC.
 A TEXAS LIABILITY COMPANY
 3144 S. 5TH STREET
 TEMPLE, TX 76502

FRIARS RIDGE LTD.
 Called 44.034 Acres
 (Doc.# 2016-00032251)

BUILDING SETBACK LINES
 Front: 25'
 Exterior Side: 6'
 Interior Side: 15'
 Rear: 10'

● Denotes 3/8" Iron Rod with "ACS" Cap
 set, unless otherwise noted.

CURVE	RADIUS	ARC LENGTH	CHORD LENGTH	CHORD BEARING	DELTA ANGLE
C1	10.00'	15.86'	14.25'	S 62°03'51" W	40°52'33"
C2	10.00'	15.11'	14.14'	N 28°22'20" W	40°00'00"
C3	45.00'	13.03'	12.94'	N 10°03'31" E	16°35'35"
C4	45.00'	24.86'	24.32'	S 82°31'54" E	38°01'24"
C5	45.00'	13.04'	12.94'	S 55°14'15" E	16°36'06"
C6	45.00'	18.12'	18.00'	S 35°24'00" E	23°04'23"
C7	45.00'	18.12'	18.00'	S 12°24'30" E	23°04'23"
C8	45.00'	12.65'	12.60'	S 07°10'36" W	16°06'05"
C9	45.00'	26.30'	25.42'	S 31°58'05" W	33°28'53"
C10	45.00'	10.04'	10.02'	S 55°06'04" W	12°47'06"
C11	45.00'	2.12'	2.12'	S 26°21'12" E	2°41'55"
C12	45.00'	35.04'	34.16'	S 02°41'52" E	44°36'45"
C13	45.00'	16.18'	16.10'	S 28°15'44" W	20°36'23"
C14	45.00'	20.64'	20.46'	S 53°21'24" W	26°11'04"
C15	45.00'	14.55'	14.40'	S 18°56'52" W	24°53'31"
C16	45.00'	18.02'	17.90'	N 11°07'54" W	22°56'53"
C17	45.00'	28.20'	27.74'	N 47°42'28" W	35°53'51"
C18	45.00'	14.21'	14.21'	N 28°51'19" W	14°48'23"
C19	10.00'	15.71'	14.14'	S 61°31'40" W	40°00'00"
C20	10.00'	15.82'	14.22'	S 28°03'24" E	40°31'41"
C21	10.00'	15.60'	14.06'	N 61°56'31" E	84°22'14"
C22	10.00'	15.71'	14.14'	N 27°44'34" W	40°00'00"
C23	10.00'	15.60'	14.06'	S 61°56'31" W	84°22'14"
C24	10.00'	15.71'	14.14'	N 62°15'21" E	40°00'00"
C25	10.00'	15.82'	14.22'	N 28°03'24" W	40°31'41"
C26	10.00'	15.71'	14.14'	N 61°31'40" E	40°00'00"
C27	10.00'	15.71'	14.14'	N 28°22'20" W	40°00'00"
C28	10.00'	15.36'	14.03'	N 27°56'03" W	24°07'27"
C29	10.00'	15.15'	14.11'	S 62°22'41" W	40°14'53"
C30	10.00'	15.66'	14.11'	N 27°37'13" W	84°45'07"

NOTE:
 Tracts A, B, C and D will be Owned and
 Maintained by the Homeowners'
 Association (HOA).

Purpose of Amended Plat:
 To add Public Utility Easements.

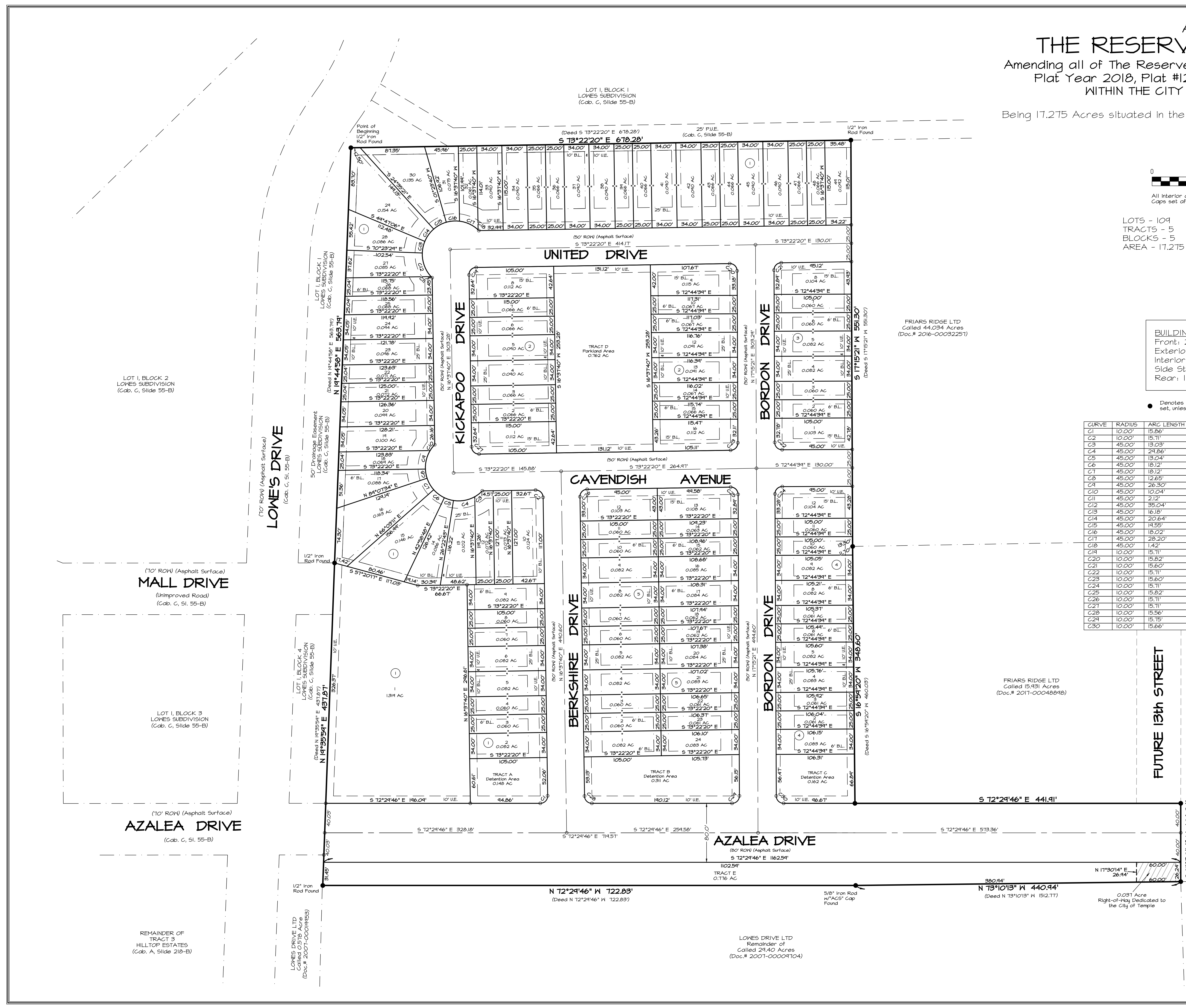
LEGEND
 B.L. - Building Line
 U.E. - Utility Easement

AMENDED PLAT OF
THE RESERVE at FRIARS CREEK
 Amending all of The Reserves at Friars Creek, a subdivision of record in
 Plat Year 2018, Plat #121-B, Plat Records of Bell County, Texas.
 WITHIN THE CITY OF TEMPLE, BELL COUNTY, TEXAS

Plot Date: 04-11-2018
 Survey completed: 10-03-2011
 Scale: 1" = 60'
 Job No.: 180201
 Dwg No.: 180201P
 Drawn by: MDH
 Surveyor: CCL #14636
 Copyright 2018 All County Surveying, Inc.



PROSPERITY ENDEAVORS 3, LLC
 Called 14.812 Acres
 (Doc.# 2018-00010310)



LOT 1, BLOCK 2
 LONES SUBDIVISION
 (Cab. C, Slide 55-B)

MALL DRIVE
 (Improved Road)
 (Cab. C, Sl. 55-B)

LOT 1, BLOCK 3
 LONES SUBDIVISION
 (Cab. C, Slide 55-B)

AZALEA DRIVE
 (Cab. C, Sl. 55-B)

REMAINDER OF
 TRACT 3
 HILLTOP ESTATES
 (Cab. A, Slide 218-B)

LOT 1, BLOCK 1
 LONES SUBDIVISION
 (Cab. C, Slide 55-B)

LOT 1, BLOCK 4
 LONES SUBDIVISION
 (Cab. C, Slide 55-B)

LOT 1, BLOCK 5
 LONES SUBDIVISION
 (Cab. C, Slide 55-B)

LONES DRIVE LTD
 Called 0.576 Acres
 (Doc.# 2007-00019853)

LOT 1, BLOCK 1
 LONES SUBDIVISION
 (Cab. C, Slide 55-B)

TRACT D
 Detention Area
 0.162 AC

TRACT A
 Detention Area
 0.146 AC

TRACT B
 Detention Area
 0.311 AC

TRACT C
 Detention Area
 0.162 AC

TRACT E
 0.116 AC

LONES DRIVE LTD
 Remainder of
 Called 24.40 Acres
 (Doc.# 2007-00004104)

FRIARS RIDGE LTD
 Called 44.034 Acres
 (Doc.# 2016-00032251)

FRIARS RIDGE LTD
 Called 15.531 Acres
 (Doc.# 2017-00048848)

FUTURE 13th STREET

0.031 Acre
 Right-of-Way Dedicated to
 the City of Temple